



“ For over a decade Coolspirit have been supplying the UK’s top organisations with storage products and solutions so be assured we will meet your requirements head on.

It’s all about getting things right first time, quickly and simply! ”

Damon Robertson
Coolspirit Ltd

Our address

24 The Bridge Business Centre
Beresford Way
Chesterfield
S41 9FG

Get in touch

Call us on: 01246 454222
Email us: web@coolspirit.co.uk
Find us: [View location map](#)
Web: www.coolspirit.co.uk

Office hours

mon - thurs 8:30am - 5:30pm
fri 8:30am - 5pm
sat - sun Closed

“ Boost your storage buying power...
use ours! ”

Buy with confidence from
Coolspirit your authorised
Overland Partner



How to Simplify Windows Storage Management with SnapServer® SAN S2000

Why do you need it?

When companies add new storage to their data center, a key consideration is the level of ‘out-of-the-box’ integration you will receive.

- Will you have to learn an additional storage management tool?
- How complex is provisioning?
- What will it take to implement and manage important data protection features like mirroring and replication?

How we help...

The S2000’s Windows integration enables rapid SAN and/or virtual server deployments and simplifies ongoing management tasks. Now, everyone can enjoy the benefits of a SAN without having deep storage administration or Fibre Channel networking experience.

- ✓ Designed from the ground up to integrate and interoperate with all of your Windows servers
- ✓ Intuitive Windows management interface with no additional training required
- ✓ Effortless provisioning, management and data protection
- ✓ Accelerates Hyper-V deployments

Fully Integrated SnapServer SAN Manager for Windows

Managing your Windows iSCSI SAN may seem daunting, but with the easy to use SnapServer SAN Manager for Windows, all aspects of managing your iSCSI SAN become effortless. The SnapServer SAN’s integrated management interfaces and wizards guide you through every aspect of creating and managing your storage so you’re no longer burdened with the arcane complexities of provisioning your storage or managing your mirroring and replication tasks.

Effortless Scalability

Adding capacity to your Windows volumes is achieved with just a couple of mouse clicks. Simply choose the level of capacity utilization you wish to have trigger the automatic expansion of your volumes, leaving the rest up to the intelligence of the SnapServer SAN Manager software. You no longer have to worry about running out of capacity or having to “guess” at how much capacity you “may” need in the future. Simply set the policy for automatically extending your Windows Volume and our intelligent expansion feature handles all those tricky diskpart commands for you. (Figure 1)

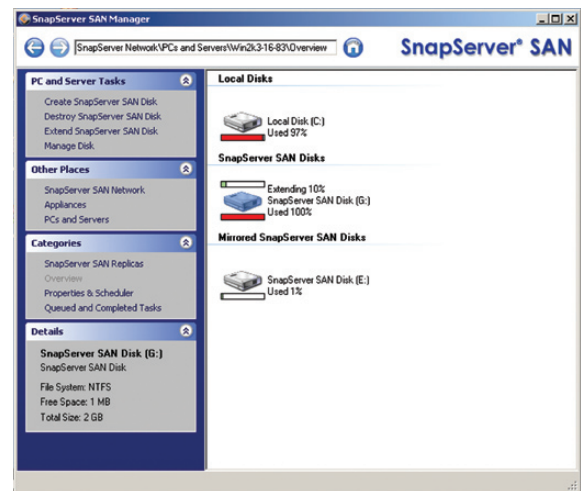


Figure 1 – Expanding a Windows Volume with SnapServer SAN Manager

Integrated Management and Monitoring

The SnapServer SAN software was thoughtfully designed from the beginning to be fully integrated into a Windows environment. The “Single-Click” Volume Creation Wizard creates the target, connects the iSCSI Initiator, then partitions and formats the Windows Volume...all in one click of the mouse. (Figure 2) Compare that to doing each step manually.

The included Microsoft VSS provider ensures seamless integration with other VSS-compliant applications and backup tools for Application Consistent backups and replications. The VDS hardware provider allows Microsoft administrators to configure SnapServer SAN storage targets via standard Microsoft storage management tools. The Statistics monitoring feature enables you to compare volumes on the SnapServer SAN appliance and see how heavily they are being used. (Figure 3)

Data Protection

Besides the integration with VSS for Application Consistent replication and backup support, administrators also have the option of deploying complete Active-Active Failover solutions with the SnapServer SAN products. Support for Microsoft Cluster Server gives administrators additional flexibility to deploy data protection scenarios that best meet their business needs.

Virtualization Support

Windows Hyper-V Servers are the hottest new deployments of Microsoft virtualization technology. Supporting direct access for guest VM's to iSCSI targets without having to expose the target to the Hyper-V host allows administrators another layer of abstraction and security for their iSCSI SAN's. Extending the SnapServer SAN's VSS provider to also support the Hyper-V VSS Writer for Replications and Backups of Virtual Machines gives another level of data protection and disaster recovery. The Active-Active Failover support in SnapServer SAN is also extended for clustered Hyper-V Servers, giving the ultimate in flexibility and data protection for virtualizing with Microsoft technologies.

NOTE: S2000 users also receive the added benefit of certified VMware compatibility. This flexibility supports heterogeneous environments and provides investment protection in the event you adopt VMware for virtualization.

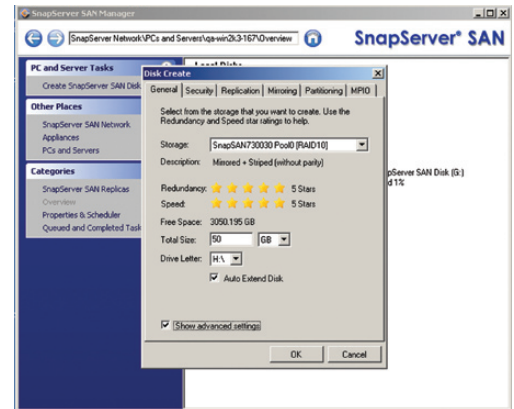


Figure 2 – SnapServer SAN Manager Windows application

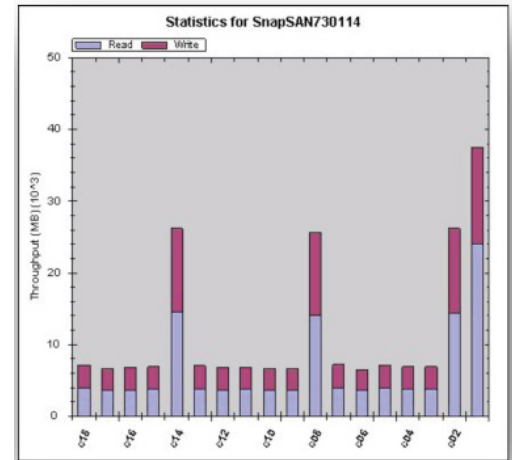


Figure 3 – SnapServer SAN Manager Statistics page showing Throughput of Volumes

Hardware RAID Support Capacity/S2000 Appliance Capacity Expansion	S2000 2U iSCSI SAN Appliance 0, 1, 5, 6, 10, 50, 60 12 drives SAS, SATA (intermix supported) Up to seven 2U 12 drive E2000 enclosures can be added
---	---

Microsoft Certifications <ul style="list-style-type: none"> ✓ Windows Server 2003 ✓ Windows Server 2008 ✓ Windows Server 2008 R2 	VMware Certifications <ul style="list-style-type: none"> ✓ ESX 3.5 Update 5 ✓ ESX 4.0 Update 1
---	--

About SnapServer SAN S2000

To learn more about the SnapServer SAN 2000 solution for iSCSI SAN environments and easily integrating storage into your VMware and Hyper-V deployments, visit: www.overlandstorage.com/SAN.

About Overland Storage

For over 29 years, Overland Storage has helped businesses effortlessly store, manage and protect their data. To learn more about Overland Storage's complete line of NAS, SAN, VTL and Tape solutions, visit: www.overlandstorage.com.

