



“ I would not hesitate to recommend Coolspirit to any prospective customers. They are responsive, very easy to work with and tailor solutions to suit customer’s specific needs, resulting in very high customer satisfaction. ”

Giovanni Goduti
CA Technologies – Recovery Management
& Data Modeling Business Unit

Our address

24 The Bridge Business Centre
Beresford Way
Chesterfield
S41 9FG

Get in touch

Call us on: 01246 454222
Email us: web@coolspirit.co.uk
Find us: [View location map](#)
Web: www.coolspirit.co.uk

Office hours

mon - thurs 8:30am - 5:30pm
fri 8:30am - 5pm
sat - sun Closed

“ Boost your storage buying power...
use ours! ”

Buy with confidence from
Coolspirit your authorised
CA Partner

CA ARCserve® Backup



In business, evolution is constant. Staff grows. New offices spring up. New applications are being implemented, and typically, you're the one on the hook to make sure that your data is always protected.

CA ARCserve Backup goes beyond backup, giving businesses highly reliable data protection with centralised management that makes sense, no matter how complex your data or its infrastructure is. CA ARCserve Backup offers all this at a fraction of the cost of the competition.

Reduce your backup storage by and regain precious time with the only product that combines data deduplication; integrated backup copy to cloud storage; granular restore of applications such as active directory®, Microsoft® Exchange and Microsoft Sharepoint®; infrastructure visualisation; and archiving—for both physical and virtual servers in a single package.¹ Your data is always secure, which means that you can spend your time on more pressing issues.

OVERVIEW

As organisations are challenged with managing increasingly vast volumes of information from new applications, versions and growing numbers of virtualised servers, there is a new emphasis on improving data management efficiency. With CA ARCserve Backup, organizations have access to easy-to-use tools that reduce management time, and innovative technology that makes data protection simple.

BENEFITS

CA ARCserve Backup has extensive management features that work together to help reduce the time that you spend managing your backups. In this way, it provides “enterprise-class” functionality no matter how simple or complex your data or your IT infrastructure is. CA ARCserve Backup helps you quickly prepare for, respond to and recover from the disasters and disruptions that would otherwise threaten the integrity and reliability of your core business operations.

THE CA ARCSERVE ADVANTAGE

CA ARCserve Backup offers superior functionality for businesses of every size and type that need to protect the data that they rely on each day. In this way, CA ARCserve Backup helps to ensure that the data that your organisation creates is protected and recoverable following a disaster or disruption. Moreover, CA ARCserve Backup is a core component of the larger CA ARCserve® Family of Products—providing you with the full continuum of data protection and available technologies to help meet all your data needs.

You'll be surprised at how much we can do for you

We make managing your environment easy with a dashboard feature that shows you the status of your physical and virtual servers, storage and connectivity at a glance. We help you to avoid unplanned downtime as well as reduce your backup storage requirements with threshold alert settings and built-in data deduplication. We also display your environment in a simple network diagram to help you understand how everything is being protected and provide reports that you can send to your management and auditors showing the status of your data protection.

CA ARCserve Backup supports Windows®, UNIX® and Linux® environments. Its modular architecture enables you to start small and grow as you need to, adding modules to provide additional levels of protection without having to learn a new product or buy another solution.

We deliver a host of core capabilities

INTEGRATED DATA DEDUPLICATION Improve the economics of backup and recovery by enabling longer retention periods, providing a cost-effective means of reducing storage, protecting critical data and integrating, configuring and managing data deduplication in the existing backup environment.

[1] AS OF FEBRUARY 2011.



VIRTUALISING SERVERS WITH CONFIDENCE Incorporate sophisticated backup and recovery functionality into VMware, Microsoft Hyper-V™ and Citrix® XenServer virtualisation technologies—easing management and mitigating the risk of data on virtualised servers.

GRANULAR RESTORE OF ACTIVE DIRECTORY Quickly restore individual Active Directory objects from a System State backup without having to reboot the Active Directory domain controller. Single System State backup allows for both object-level and system-level restore, saving time.

INFRASTRUCTURE VISUALISATION Simplify system management with an easy-to-read network diagram view of your entire environment. The diagram includes all of the servers, storage and other devices, showing how they relate to each other and to the CA ARCserve Backup Media server(s). Easy drilldown on each component offers status, backup methodology and other key information to reduce management time.

DASHBOARD WITH STORAGE RESOURCE MANAGER (SRM) REPORTING Proactively avoid downtime with graphical insight into your backup environment to monitor the status of all backup activities, find the nodes that are taking the longest, locate backed-up data, discover whether data is encrypted and ready for disaster recovery and track volume, disk and memory usage on each of your Production servers.

CENTRALISED MANAGEMENT AND ADMINISTRATION Reduce management time and help to provide faster responses by enabling IT Administrators to manage, modify and control backup and restore jobs, media devices, activity logs, alerts, catalogs, product licensing and reports from a single point that spans local and remote servers and locations.

UNIX/LINUX DATA MOVERS FOR STORAGE AREA NETWORK (SAN)-BASED BACKUPS Provide faster, more efficient backups and restores for databases and file systems on UNIX and Linux servers while also providing centralised management, reporting and licensing for all servers via the CA ARCserve Backup Media server.

GRANULAR RESTORES OF SHAREPOINT Quickly recover individual files, sites and sub-sites within a SharePoint environment and help to keep users productive. You can also restore the entire environment if required and you can achieve all types of restoration by using a single-pass, full-farm backup.

ADVANCED BACKUP AND RESTORE SUPPORT Protect your business-critical applications with specific agents—including Microsoft SQL Server®, Exchange Server and SharePoint, Oracle, Lotus Domino, SAP R/3 and Sybase—and help to ensure data integrity by protecting the transaction log, archive log, journal files and all associated data.

FLEXIBLE BACKUP METHODS Use high-performance, non-disruptive backup and restore operations that help to meet the specific needs of your mission-critical information and data assets. These include backup to disk, backup to tape, disk-to-disk-to-tape (D2D2T) backup, disk-to-disk-to-cloud (D2D2C) backup, virtual tape library (VTL) and Microsoft Volume Shadow Copy Service snapshot support, hardware snapshot support, multiplexing and multi-streaming. All of these work in concert to protect your data, help you to recover quickly and to meet your service-level agreements (SLAs) for recovery point objectives (RPOs) and recovery time objectives (RTOs).

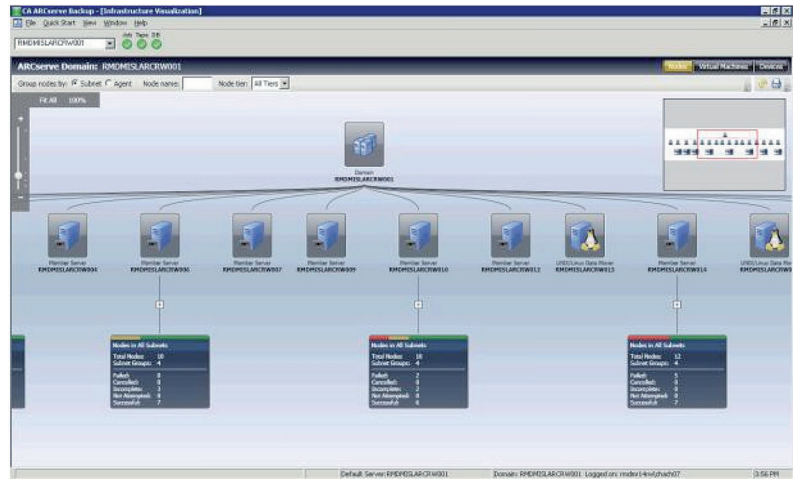
CA ARCSERVE® REPLICATION AND CA ARCSERVE® HIGH AVAILABILITY INTEGRATION Eliminate backup windows by enabling you to browse and back up replicated data, restore data to the Production or Replica server, view CA ARCserve Replication and CA ARCserve High Availability reports and launch the CA ARCserve Replication and CA ARCserve High Availability graphical user interface (GUI) from within the CA ARCserve Backup GUI.

WIDE AREA NETWORK (WAN) BANDWIDTH-OPTIMISED REMOTE OFFICE BACKUPS Eliminate tapes from remote offices by replicating remote office data to your central data center and perform non-disruptive Replica server backups—helping you to better utilise your existing backup resources.

SMART RESTORE CAPABILITY Provide reliable recovery by redirecting restore jobs to other media containing the same data without any manual intervention, reducing the chances that errors will negatively affect your recovery processes.

FLEXIBLE DEPLOYMENT Available as individual components, modules based on server type and packages based on capacity to meet your specific needs and purchasing requirements, making it incredibly easy to buy and manage your licenses.

THE CA ARCSERVE BACKUP DASHBOARD INCLUDES INFRASTRUCTURE VISUALISATION, WHICH PROVIDES A DETAILED GRAPHICAL VIEW OF THE BACKUP ENVIRONMENT, SHOWING NODES AND OTHER ENTITIES WITH STATUS AS WELL AS POP-UPS TO RETRIEVE EVEN MORE INFORMATION.



New features and functionality in CA ARCserve Backup r16

CA ARCserve Backup r16 is designed to extend the capabilities of the product with a host of robust new features and functionality, including:

ARCHIVING Reduce backup windows, network traffic and storage management costs by archiving data to disk, tape or the cloud. This is important to manage the growing volumes of data while reducing the drain on your physical resources, prolonging your infrastructure investment.

INTEGRATED BACKUP COPY TO CLOUD STORAGE Easily take advantage of cloud services as part of a D2D2C backup policy for remote, off-site protection, archiving or additional storage capacity. It enables the flexibility of cloud services for your data protection and helps you to take advantage of operational budget instead of capital budget for your storage needs.

SNAPSHOT AND FILE-LEVEL BACKUP INTEGRATION Reduce risk and improve recovery times by using a combination of snapshot-based backups (CA ARCserve® D2D) and traditional file-based backups (CA ARCserve Backup) to protect your servers. Quick recovery with the most efficient methodology, based on the type of outage, results in reduced downtime costs, increased employee productivity and more time for IT personnel to pursue strategic projects.

SYNTHETIC FULL BACKUP Reduce recovery time and complexity by providing a “full” backup picture to recover from, eliminating the tedious process of restoring multiple backups to recover to a specific point in time. This is important because it results in less downtime, a more reliable recovery process and reduced IT resource time.

MIGRATE CA ARCSERVE D2D BACKUPS TO TAPE VIA THE CA ARCSERVE BACKUP CONSOLE Storing data on tape is a requirement for many businesses that need to keep data long-term and/or off-site for future reference or recovery. You can easily clone CA ARCserve D2D backups to tape media, catalog with CA ARCserve Backup and enable recovery via the CA ARCserve Backup console with a single point of management.

DISASTER RECOVERY OPTION BASED ON WINDOWS PREINSTALLATION ENVIRONMENT (WINPE) Provide a simple, standardised bare-metal restore process across various Windows platforms to help ensure quick recovery of a crashed server, resulting in reduced downtime, increased employee productivity and reduced costs.

ENHANCED TAPE MANAGEMENT Provide more efficient use of backup media and improve the ease of scheduling backup jobs, resulting in reduced media costs and enabling IT Administrators to accomplish more in less time.

Doing our small part to make your life easier

CA ARCserve Backup integrates easily with other management tools offered by both CA Technologies and third-party vendors. In this way, you can benefit from the full support of CA Technologies, a long-time market leader in IT-enabled business solutions.



Part of the CA ARCserve Family of Products

As a key component of the CA ARCserve Family of Products, CA ARCserve Backup delivers the functionality that helps you to maximise the performance, efficiency and effectiveness of your backup and recovery strategy.

By integrating the control of your operations, you'll better manage risk, costs and service—and ensure that recovery and availability measures align with business goals.
